

Transcendent by Actabl

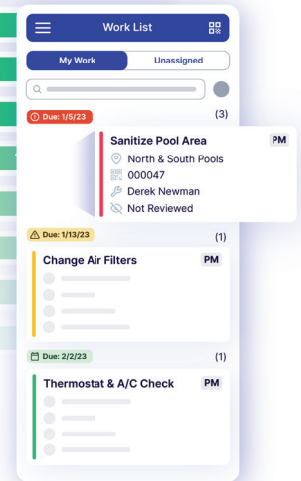
ENTERPRISE ASSET MANAGEMENT & CAPEX PLANNING

Today, hotel enterprises and engineering leaders lack the fundamental visibility and accountability they need to effectively manage their assets. Poor management increases costs, shortens asset lifecycles, and affects the success and profitability of the business.

Transcendent is a comprehensive asset management and CapEx planning solution designed specifically for hoteliers to efficiently track and manage asset lifecycles, maintenance, planning, and operations. It empowers hotels with the accountability, data, and visibility to efficiently manage assets, saving time and money.

Work Order Performance

	Past Due	Today	Tomorrow	7 Days	30 Days	Unassigned
All Work	7	14	0	17	23	1777
Equipment PM	0	4	0	4		
Room PM	0	0	0	0		
Scheduled Inspections	0	1	0	1		
Scheduled Rounds	2	9	0	10		
Standards	376	0	0	0		
Work From Inspection	0	0	0	0		
Work Requests	3	0	0	0		
Work Unscheduled	2	0	0	2		



BENEFITS



Improve Engineering Operational Effectiveness

Optimize team workflows by utilizing a seamless solution to make real-time decisions, enable high performance, reduce downtime, and boost guest satisfaction.



Plan for Future Expenditures

Utilize operations data to forecast and budget 10 years in advance and strategically evaluate potential investments and allocate resources to projects that offer the most significant return on investment.



Control Costs and Asset Value

Monitor the overall financial health of your properties and eliminate manual processes like spreadsheets or paper-based systems with an accurate view of asset values, depreciation, and related expenses, such as procurement and repairs.



Ensure Safety and Compliance

Identify and address safety risks to maintain a high-quality, safe environment for guests and staff, while maintaining compliance standards and mitigating potential liabilities.

Unlock the Potential of Your Properties and Achieve Excellence with Seamless Asset Management and CapEx Planning



Asset Management

A powerful tool for enterprises to manage engineering operations such as preventative and corrective maintenance, providing a centralized database to store asset details, maintenance history, warranties, and other relevant information.

Asset Tree

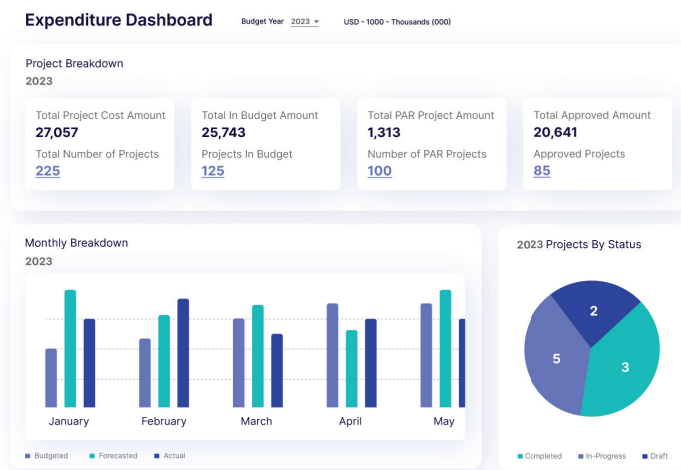
Asset ID	Asset Description	Asset Type	Location	Status	Manufacturer
000081	Laundry Equip. Air Dryer	Air Curtain	Laundry Room	Retired	DryWave
000104	Coffee Machine	Coffee Machine, Food Service	Restaurant	In Service	Caffe Vita
000105	Iced Tea Machine	Tea Brewer	Restaurant	In Service	Caffe Vita
000106	Food Warmer	Food Warmer	Restaurant	In Service	Caffe Vita
000112	Hot Cocoa Machine	Beverage Dispenser	Lobby	In Service	CocoLuxe
000118	Range	Oven/Range Combo	Kitchen	In Service	Cookwise
000120	Front Load Convection Oven	Oven, Convection	Kitchen	In Service	Cookwise
000125	Griddle	Grill, Flat Top	Kitchen	Retired	Cookwise

- Work Order Management**
 Auto-generate, assign, and schedule maintenance and repair tasks, ensuring efficient issue resolution
- Asset Tracking**
 Access each asset's entire maintenance history along with brands, models, serial numbers, and warranty information
- Document Management**
 Keep documents and contracts related to the asset in one easily-accessible location from anywhere on and off property
- Intuitive Mobile App**
 Simply scan the asset QR code, enabling increased productivity and better inspections



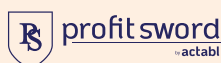
CapEx Planning

Leverage asset data to support intelligent capital planning and smart decision-making. Make strategic investments in assets or technologies to improve operational efficiency, guest satisfaction, and profitability.



- Automated Budget**
 Streamline the annual budget creation and approval process, with data to allocate funds for the replacement or upgrade of aging assets
- 10-Year Plan**
 Create a clear roadmap for managing cashflows, prioritizing projects, and maintaining financial discipline
- Project Tracking**
 Manage a list of projects - budgeted & unbudgeted - with relevant information, spending, and maintenance history
- Above-Property Reporting**
 Provide visibility into the capital needs of the entire portfolio to align strategies to objectives

Actabl combines business and labor intelligence with a comprehensive operations platform. Check out our other products:



- Business intelligence
- Business analytics
- Centralized forecasting & budgeting



- Labor management
- Productivity & wage benchmarking
- Contract labor & overtime



- Mobile housekeeping operations
- Messaging & task automation
- Guest Request ticket queues

